

# HC-238A lifting crane capacities — open throat boom

PCSA Class 12-720  
Refer to Notes Page 7.

**Boom** — tubular: 60" (1.57 m) wide, 54" (1.37 m) deep with open throat top section, 13/16" (35 mm) boom pendants, boom live mast, and boom midpoint suspension pendants as required.

**Mounting** — rubber tire mobile base: FMC, 8 x 4 drive, 270" (6.86 m) wheelbase, 11' 10" (3.61 m) wide.

**Counterweights** — refer to charts page 1.

Length	HC-238A open throat boom						"A" upper and "A" bumper counterweights								"AB" upper and "A" bumper counterweights			
	Radius		Angle	Boom point height		On outriggers				On tires (static)				On outriggers only				
	Feet	meters				Over rear		Over side and 360° swing		Over rear		Over side		Over rear		Over side and 360° swing		
			Pounds	kilograms	Pounds	kilograms	Pounds	kilograms	Pounds	kilograms	Pounds	kilograms	Pounds	kilograms				
50' (15.24 m)	12	3.66	80.2	55' 11"	17.05	233,900*	106,095*	233,900*	106,095*	90,500*	41,050*	75,000*	34,019*	280,000*	127,005*	280,000*	127,005*	
	13	3.90	79.0	55' 9"	16.99	217,600*	98,701*	217,600*	98,701*	87,300*	39,598*	70,200*	31,842*	260,200*	118,024*	260,200*	118,024*	
	14	4.27	77.9	55' 7"	16.93	203,600*	92,351*	203,600*	92,351*	84,300*	38,237*	65,900*	29,891*	242,700*	110,086*	242,700*	110,086*	
	15	4.57	76.7	55' 4"	16.86	191,100*	86,681*	191,100*	86,681*	81,500*	36,967*	62,100*	28,168*	227,600*	103,237*	227,600*	103,237*	
	20	6.10	70.7	53' 10"	16.42	145,900*	66,179*	145,900*	66,179*	70,500*	31,978*	47,800*	21,681*	170,200*	77,201*	170,200*	77,201*	
	25	7.62	64.5	51' 10"	15.79	117,400*	53,251*	117,400*	53,251*	61,200*	27,759*	30,300*	17,372*	131,300*	59,556*	131,300*	59,556*	
	30	9.14	58.0	49' 1"	14.98	95,500*	43,378*	92,000*	41,730*	48,300*	21,908*	31,400*	14,242*	106,400*	48,262*	106,400*	48,262*	
	35	10.67	50.9	45' 6"	13.87	79,800*	36,196*	71,300*	32,341*	39,400*	17,871*	26,500*	12,020*	88,900*	40,324*	88,500*	40,142*	
40	12.19	43.1	40' 10"	12.45	68,100*	30,889*	57,800*	26,217*	32,900*	14,923*	22,500*	10,205*	76,200*	34,563*	72,000*	32,658*		
50	15.24	21.6	25' 1"	7.63	49,400*	22,407*	40,900*	18,551*	24,100*	10,931*	15,900*	7,212*	57,900*	26,263*	51,500*	23,360*		
60' (18.29 m)	13	3.96	80.9	65' 11"	20.09	209,000*	95,072*	209,000*	95,072*	87,300*	39,598*	70,200*	31,842*	209,000*	95,072*	209,000*	95,072*	
	14	4.27	79.9	65' 9"	20.04	203,700*	92,396*	203,700*	92,396*	84,200*	38,192*	66,000*	29,937*	203,900*	92,487*	203,900*	92,487*	
	15	4.57	78.9	65' 7"	19.98	191,100*	86,681*	191,100*	86,681*	81,500*	36,967*	62,200*	28,213*	199,700*	90,582*	199,700*	90,582*	
	20	6.10	74.0	64' 4"	19.61	146,000*	66,224*	146,000*	66,224*	70,400*	31,932*	47,900*	21,727*	156,100*	70,805*	156,100*	70,805*	
	25	7.62	69.0	62' 8"	19.11	117,500*	53,297*	117,500*	53,297*	61,600*	27,941*	38,400*	17,417*	125,700*	57,016*	125,700*	57,016*	
	30	9.14	63.8	60' 6"	18.44	95,700*	43,408*	92,700*	42,048*	49,700*	22,089*	31,600*	14,333*	104,800*	47,536*	104,800*	47,536*	
	35	10.67	58.3	57' 9"	17.60	80,100*	36,332*	71,900*	32,613*	39,700*	18,017*	26,700*	12,110*	88,600*	40,188*	88,600*	40,188*	
	40	12.19	52.5	54' 3"	16.55	68,400*	31,025*	58,400*	26,489*	33,300*	15,104*	22,700*	10,296*	75,400*	34,200*	72,500*	32,985*	
50	15.24	39.2	44' 7"	13.59	50,000*	22,679*	41,500*	18,824*	24,600*	11,159*	16,400*	7,438*	58,600*	26,073*	52,100*	23,032*		
60	18.29	19.7	26' 10"	8.19	38,400*	17,417*	31,400*	14,242*	18,000*	8,527*	12,000*	5,443*	42,600*	19,323*	39,000*	18,052*		
70' (21.34 m)	15	4.57	80.5	75' 9"	23.08	181,300*	82,236*	181,300*	82,236*	81,200*	36,831*	62,000*	28,122*	181,300*	82,236*	181,300*	82,236*	
	20	6.10	76.4	74' 8"	22.77	145,900*	66,179*	145,900*	66,179*	70,200*	31,842*	47,900*	21,727*	155,900*	70,715*	155,900*	70,715*	
	25	7.62	72.1	73' 3"	22.34	117,400*	53,251*	117,400*	53,251*	61,600*	28,032*	38,300*	17,372*	125,500*	56,925*	125,500*	56,925*	
	30	9.14	67.8	71' 5"	21.70	95,900*	43,434*	93,100*	42,229*	43,800*	19,867*	31,500*	14,288*	103,400*	46,901*	103,400*	46,901*	
	35	10.67	63.3	69' 2"	21.09	80,100*	36,332*	72,300*	32,794*	39,900*	18,098*	26,700*	12,110*	86,100*	39,054*	86,100*	39,054*	
	40	12.19	58.6	66' 5"	20.24	68,400*	31,025*	58,700*	26,625*	33,400*	15,149*	22,800*	10,341*	72,400*	32,040*	72,400*	32,040*	
	50	15.24	48.4	60' 0"	17.98	50,300*	22,815*	41,800*	18,960*	24,700*	11,203*	16,600*	7,529*	54,900*	24,902*	52,400*	23,768*	
	60	18.29	36.2	48' 0"	14.63	38,700*	17,554*	31,700*	14,378*	19,000*	8,618*	12,200*	5,633*	42,400*	19,332*	40,200*	18,234*	
70	21.34	18.2	28' 6"	8.69	31,000*	14,061*	25,100*	11,385*	15,000*	6,803*	9,100*	4,127*	33,000*	14,968*	32,000*	14,514*		
80' (24.38 m)	20	6.10	78.1	84' 11"	25.89	145,900*	66,043*	145,900*	66,043*	69,900*	31,705*	47,700*	21,636*	150,300*	68,174*	150,300*	68,174*	
	25	7.62	74.4	83' 9"	25.52	117,200*	53,161*	117,200*	53,161*	61,600*	28,032*	38,100*	17,281*	124,900*	56,653*	124,900*	56,653*	
	30	9.14	70.7	82' 2"	25.04	95,600*	43,363*	93,400*	42,365*	48,900*	22,100*	31,400*	14,242*	99,900*	45,313*	99,900*	45,313*	
	35	10.67	66.8	80' 2"	24.45	80,100*	36,332*	72,500*	32,885*	30,900*	18,098*	26,600*	12,065*	83,300*	37,784*	83,300*	37,784*	
	40	12.19	62.4	77' 10"	23.73	68,300*	30,980*	58,700*	26,625*	33,400*	15,149*	22,600*	10,251*	70,000*	31,751*	70,000*	31,751*	
	50	15.24	54.5	71' 4"	21.87	50,400*	22,867*	41,900*	19,005*	24,800*	11,249*	16,600*	7,529*	53,400*	24,221*	52,500*	23,813*	
	60	18.29	45.1	63' 4"	19.29	38,800*	17,599*	31,800*	14,424*	19,100*	8,663*	12,300*	5,674*	41,500*	18,824*	40,300*	18,779*	
	70	21.34	33.8	51' 2"	15.59	31,100*	14,106*	25,300*	11,475*	15,100*	6,849*	9,300*	4,218*	33,100*	15,013*	32,200*	14,605*	
80	24.38	17.0	30' 1"	9.17	25,600*	11,611*	20,400*	9,253*	12,100*	5,488*	7,000*	3,175*	26,800*	12,156*	26,400*	11,974*		
90' (27.43 m)	20	6.10	79.4	95' 2"	29.00	144,500*	65,544*	144,500*	65,544*	70,500*	31,978*	48,600*	22,044*	144,500*	65,544*	144,500*	65,544*	
	25	7.62	76.2	94' 1"	28.67	117,700*	53,387*	117,700*	53,387*	62,300*	28,258*	38,900*	17,644*	126,100*	57,198*	126,100*	57,198*	
	30	9.14	72.9	92' 8"	28.25	96,800*	43,817*	94,900*	43,045*	49,800*	22,588*	32,000*	14,514*	105,200*	47,717*	105,200*	47,717*	
	35	10.67	69.5	91' 0"	27.73	80,800*	36,650*	73,700*	33,429*	40,700*	18,461*	27,200*	12,337*	89,800*	40,732*	89,800*	40,732*	
	40	12.19	66.1	88' 11"	27.11	69,000*	31,297*	59,700*	27,079*	34,100*	15,467*	23,200*	10,523*	77,100*	34,971*	74,000*	33,565*	
	50	15.24	58.9	83' 9"	25.52	51,100*	23,178*	42,800*	19,323*	25,300*	11,475*	17,200*	7,801*	59,100*	28,807*	53,300*	24,176*	
60	18.29	51.1	76' 9"	23.38	39,400*	17,871*	32,400*	14,696*	19,500*	8,045*	12,800*	5,805*	47,300*	21,454*	40,900*	18,951*		

Ⓢ Ⓣ Ⓤ Ⓟ - Refer to page 6.

(continued)

**GENERAL INFORMATION ONLY**

04-207-001 08-00 FAX 008 604 6018 LINA BELLA 0000



HC-238A open throat boom						"A" upper and "A" bumper counterweights								"AB" upper and "A" bumper counterweights			
Length	Radius		Angle	Boom point height		On outriggers				On trestle (static)				On outriggers only			
	Feet	meters	Degrees	Feet	meters	Over rear		Over side and 250° swing		Over rear		Over side		Over rear		Over side and 250° swing	
						Pounds	kilograms	Pounds	kilograms	Pounds	kilograms	Pounds	kilograms	Pounds	kilograms	Pounds	kilograms
140' (42.67 m)	35	10.67	79.1	144' 2"	43.95	80,300*	36 425*	80,300*	36 423*	49,100	22 271	30,400*	13 789*	80,300*	36 423*	80,300*	36 423*
	35	10.67	77.0	143' 1"	43.61	77,200*	35 017*	73,500	33 339	40,500	18 143	25,800*	11 702*	77,200*	35 017*	77,200*	35 017*
	40	12.19	74.9	141' 10"	43.23	67,600*	30 662*	59,400	26 943	33,300*	15 104	21,800*	9 888*	72,300*	32 794*	72,300*	32 794*
	50	15.24	70.6	138' 9"	42.28	50,600	22 951	42,200	19 147	24,600	11 158	16,000*	7 257*	58,200*	26 399*	58,200*	26 399*
	60	18.29	66.2	134' 8 9/16"	41.07	38,800	17 599	31,900	14 469	18,800	8 527	12,000*	5 443*	46,400*	21 046*	40,400	18 325
	70	21.34	61.6	129' 10"	39.58	31,000	14 061	25,300	11 475	14,700	6 667	9,000	4 082	37,600	17 055	32,100	14 550
	80	24.38	56.9	123' 11"	37.77	25,600	11 611	20,500	9 298	11,700	5 307	6,700	3 039	31,000	14 061	28,500	12 920
	90	27.43	51.8	116' 9"	35.58	21,300	9 661	16,800	7 620	9,400	4 263	4,900	2 222	26,300	11 929	22,100	10 024
	100	30.48	46.4	108' 1"	32.95	18,100	8 210	14,000	6 350	7,600	3 447	3,600	1 632	22,500	10 205	18,700	8 492
	110	33.53	40.5	97' 6"	29.73	15,400	6 985	11,700	5 307	6,100	2 766	2,400	1 086	19,400	8 790	15,900	7 212
	120	36.58	33.7	84' 4"	25.70	13,200	5 987	9,900	4 490	4,800	2 177	—	—	16,800	7 620	13,700	6 214
	130	39.62	25.4	66' 8"	20.31	11,400	5 170	8,300	3 764	3,800	1 723	—	—	14,700	6 667	11,800	5 252
	140	42.67	12.0	37' 9"	11.51	9,800	4 445	7,000	3 175	2,800	1 270	—	—	12,900	5 851	10,200	4 626
	150' (45.72 m)	35	10.67	79.8	154' 4"	47.03	71,900*	32 613*	71,900*	32 613*	48,900	22 100	30,000*	13 607*	71,900*	32 613*	71,900*
35		10.67	77.9	153' 4"	46.73	70,100*	31 706*	70,100*	31 706*	39,800	18 052	25,400*	11 521*	70,100*	31 706*	70,100*	31 706*
40		12.19	75.9	152' 2"	46.38	66,400*	30 118*	59,300	26 898	33,100	15 073	21,500*	9 752*	66,400*	30 118*	66,400*	30 118*
50		15.24	71.9	149' 3"	45.50	50,400	22 861	42,100	19 096	24,400	11 067	15,700*	7 121*	55,000*	24 947*	52,700	23 904
60		18.29	67.9	145' 7"	44.38	38,600	17 508	31,700	14 378	18,600	8 436	11,700*	5 307*	46,100*	20 974*	40,200	18 234
70		21.34	63.7	141' 1"	43.01	30,800	13 970	25,200	11 430	14,500	6 577	8,800	3 991	37,400	16 964	31,900	14 469
80		24.38	59.3	135' 8"	41.36	25,400	11 521	20,300	9 207	11,500	5 216	6,500	2 948	30,800	13 970	26,300	11 929
90		27.43	54.8	129' 3"	39.30	21,200	9 616	16,700	7 574	9,200	4 173	4,700	2 131	26,100	11 838	21,900	9 933
100		30.48	50.0	121' 6"	37.03	17,900	8 119	13,800	6 259	7,400	3 356	3,400	1 542	22,300	10 115	18,500	8 391
110		33.53	44.8	112' 4"	34.23	15,200	6 894	11,600	5 261	5,900	2 676	2,200	997	19,200	8 700	15,800	7 166
120		36.58	39.0	101' 2"	30.83	13,100	5 942	9,700	4 399	4,600	2 086	—	—	16,700	7 574	13,500	6 123
130		39.62	32.5	87' 3"	26.60	11,300	5 125	8,200	3 719	3,600	1 632	—	—	14,800	6 622	11,700	5 307
140		42.67	24.5	68' 10"	20.99	9,700	4 399	6,900	3 129	2,700	1 224	—	—	12,800	5 805	10,100	4 591
150		45.72	12.4	38' 11"	11.85	8,400	3 810	5,700	2 585	—	—	—	—	11,200	5 080	8,700	3 946
160' (48.77 m)	35	10.67	78.6	163' 6"	49.85	62,600*	28 394*	62,600*	28 394*	—	—	—	—	62,600*	28 394*	62,600*	28 394*
	40	12.19	76.8	162' 5"	49.51	60,000*	27 215*	59,100	26 807	—	—	—	—	60,000*	27 215*	60,000*	27 215*
	50	15.24	73.1	159' 9"	48.69	50,300	22 815	41,900	19 005	—	—	—	—	50,600*	22 951*	50,600*	22 951*
	60	18.29	69.3	156' 4"	47 66	39,400	17 417	31,600	14 333	—	—	—	—	43,900*	19 912*	40,000	18 143
	70	21.34	65.4	152' 2"	46.39	30,600	13 879	25,000	11 339	—	—	—	—	37,200	16 873	31,700	14 378
	80	24.38	61.4	147' 2"	44.86	25,200	11 430	20,100	9 117	—	—	—	—	30,600	13 879	26,100	11 838
	90	27.43	57.3	141' 3"	43.06	21,000	9 525	16,500	7 484	—	—	—	—	25,900	11 748	21,700	9 842
	100	30.48	52.9	134' 3"	40.93	17,700	8 028	13,600	6 188	—	—	—	—	22,100	10 024	18,300	8 300
	110	33.53	48.3	126' 1"	38.43	15,000	6 803	11,400	5 170	—	—	—	—	19,000	8 618	15,600	7 076
	120	36.58	43.3	116' 4"	35.46	12,900	5 851	9,500	4 309	—	—	—	—	16,500	7 484	13,300	6 032
	130	39.62	37.8	104' 8"	31.89	11,100	5 034	8,000	3 629	—	—	—	—	14,400	6 531	11,500	5 216
	140	42.67	31.4	90' 2"	27.47	9,500	4 309	6,700	3 030	—	—	—	—	12,600	5 715	9,900	4 490
	150	45.72	23.7	71' 0"	21.64	8,200	3 719	5,600	2 540	—	—	—	—	11,000	4 989	8,500	3 855
	160	48.77	12.0	39' 11"	12.18	7,000	3 175	4,800	2 086	—	—	—	—	9,700	4 399	7,300	3 311
170' (51.82 m)	35	10.67	79.3	173' 9"	52.95	53,200*	24 131*	53,200*	24 131*	—	—	—	—	53,200*	24 131*	53,200*	24 131*
	40	12.19	77.6	172' 8"	52.64	50,700*	22 997*	50,700*	22 997*	—	—	—	—	50,700*	22 997*	50,700*	22 997*
	50	15.24	74.1	170' 2"	51.87	44,400*	20 139*	41,600	18 960	—	—	—	—	44,400*	20 139*	44,400*	20 139*
	60	18.29	70.6	167' 0"	50.90	38,200	17 327	31,400	14 242	—	—	—	—	38,800*	17 599*	38,800*	17 599*
	70	21.34	67.0	163' 1"	49.72	30,300	13 743	24,600	11 249	—	—	—	—	33,700*	15 286*	31,500	14 288
	80	24.38	63.3	158' 6"	48 30	25,000	11 339	19,900	9 026	—	—	—	—	27,300*	12 383*	25,900	11 748
	90	27.43	59.4	153' 0"	46.64	20,700	9 389	16,300	7 393	—	—	—	—	24,300*	11 022*	21,500	9 752
	100	30.48	55.4	146' 7"	44.89	17,400	7 892	13,400	6 078	—	—	—	—	21,300*	9 661*	18,100	8 210
	110	33.53	51.2	139' 2"	42.42	14,800	6 713	11,200	5 080	—	—	—	—	18,800	8 527	15,300	6 939
	120	36.58	46.7	130' 6"	39.77	12,600	5 715	9,300	4 210	—	—	—	—	16,200	7 340	13,100	5 942
	130	39.62	41.9	120' 3"	36.65	10,800	4 898	7,800	3 530	—	—	—	—	14,100	6 395	11,200	5 090
	140	42.67	36.6	108' 0"	32.92	9,300	4 218	6,500	2 948	—	—	—	—	12,400	5 624	9,700	4 399
	150	45.72	30.5	92' 11"	28.32	8,000	3 629	5,300	2 404	—	—	—	—	10,800	4 898	8,300	3 764
	160	48.77	23.0	73' 1"	22.27	6,800	3 084	4,400	1 995	—	—	—	—	9,500	4 309	7,100	3 220
170	51.82	11.6	41' 0"	12.49	5,800	2 630	3,500	1 587	—	—	—	—	8,300	3 764	6,100	2 766	

ⓄⓄⓄ — Refer to page 6.

**GENERAL INFORMATION ONLY**

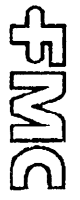
(continued)

HC-238A open throat boom						"A" upper and "A" bumper <sup>(1)</sup> chws								"AB" upper and "A" bumper counterweights			
Length	Radius		Angle	Boom point height <sup>(2)</sup>		On outriggers				On tires (static)				On outriggers only			
	Feet	meters	Degrees	Feet	meters	Over rear		Over side and 360° swing <sup>(3)</sup>		Over rear		Over side		Over rear		Over side and 360° swing <sup>(3)</sup>	
						Pounds	Kilograms	Pounds	Kilograms	Pounds	Kilograms	Pounds	Kilograms	Pounds	Kilograms	Pounds	Kilograms
180' (4.86 m)	35	10.67	79.9	183' 11"	56.05	47,300*	21,454*	47,300*	21,454*					47,300*	21,454*	47,300*	21,454*
	40	12.19	78.3	182' 11"	55.70	45,100*	20,457*	45,100*	20,457*					45,100*	20,457*	45,100*	20,457*
	50	15.24	75.0	180' 7"	55.03	39,500*	17,916*	39,500*	17,916*					39,500*	17,916*	39,500*	17,916*
	60	18.29	71.7	177' 7"	54.12	34,700*	15,512*	31,200*	14,152*					34,200*	15,512*	34,200*	15,512*
	70	21.34	68.3	173' 1"	53.01	29,900*	13,562*	24,600*	11,158*					29,900*	13,562*	29,900*	13,562*
	80	24.38	64.8	169' 7"	51.69	24,300*	11,022*	18,700*	8,935*					24,300*	11,022*	24,300*	11,022*
	90	27.43	61.3	164' 6"	50.15	20,500*	9,298*	16,100*	7,302*					21,400*	9,667*	21,400*	9,667*
	100	30.48	57.6	158' 7"	48.25	17,200*	7,801*	13,200*	5,987*					18,900*	8,572*	17,900*	8,119*
	110	33.53	53.7	151' 9"	45.26	14,600*	6,622*	10,900*	4,944*					16,600*	7,529*	15,100*	6,849*
	120	36.58	49.7	143' 11"	43.05	12,400*	5,624*	9,100*	4,127*					14,800*	6,713*	12,900*	5,851*
	130	39.62	45.3	134' 9"	41.06	10,600*	4,808*	7,600*	3,447*					13,400*	6,078*	11,000*	4,989*
	140	42.67	40.7	124' 0"	37.80	9,100*	4,127*	6,200*	2,812*					11,900*	5,397*	9,500*	4,309*
	150	45.72	35.5	111' 3"	33.91	7,800*	3,538*	5,100*	2,313*					10,600*	4,608*	8,100*	3,674*
	160	48.77	29.6	95' 7"	29.14	6,600*	2,993*	4,200*	1,905*					9,300*	4,218*	6,900*	3,129*
170	51.82	22.3	75' 1"	22.88	5,600*	2,540*	3,300*	1,496*					8,100*	3,674*	5,900*	2,676*	
180	54.86	11.3	42' 0"	12.80	4,700*	2,131*	2,500*	1,133*					7,100*	3,220*	5,000*	2,267*	
190' (57.91 m)	40	12.19	78.9	193' 2"	58.07									40,100*	18,189*	40,100*	18,189*
	50	15.24	75.8	190' 11"	58.18									35,100*	15,921*	35,100*	15,921*
	60	18.29	72.7	188' 1"	57.32									28,000*	12,700*	28,000*	12,700*
	70	21.34	69.5	184' 8"	56.28									24,500*	11,113*	24,500*	11,113*
	80	24.38	66.3	180' 7"	55.04									21,400*	9,706*	21,400*	9,706*
	90	27.43	62.9	175' 10"	53.59									18,900*	8,572*	18,900*	8,572*
	100	30.48	59.5	170' 4"	51.92									16,500*	7,484*	16,500*	7,484*
	110	33.53	55.9	164' 0"	49.99									14,700*	6,667*	14,700*	6,667*
	120	36.58	52.2	156' 9"	47.78									13,100*	5,942*	12,700*	5,760*
	130	39.62	48.3	146' 5"	45.24									11,700*	5,307*	10,800*	4,868*
	140	42.67	44.1	138' 10"	42.32									10,600*	4,808*	9,200*	4,173*
	150	45.72	39.6	127' 8"	38.91									9,400*	4,263*	7,900*	3,583*
	160	48.77	34.5	114' 5"	34.87									8,500*	3,855*	6,700*	3,039*
	170	51.82	23.8	98' 2"	29.93									7,700*	3,492*	5,700*	2,585*
180	54.86	21.7	77' 0"	23.47									6,900*	3,129*	4,800*	2,177*	
190	57.91	11.0	43' 0"	13.10									5,900*	2,676*	4,000*	1,814*	
200' (50.96 m)	40	12.19	79.5	203' 4"	61.07									36,300*	16,465*	36,300*	16,465*
	50	15.24	75.6	201' 2"	61.32									28,600*	12,972*	28,600*	12,972*
	60	18.29	73.6	198' 6"	60.51									25,000*	11,339*	25,000*	11,339*
	70	21.34	70.6	195' 3"	59.52									21,900*	9,933*	21,900*	9,933*
	80	24.38	67.5	191' 5"	58.36									19,100*	8,663*	19,100*	8,663*
	90	27.43	64.4	187' 0"	57.00									16,700*	7,574*	16,700*	7,574*
	100	30.48	61.2	181' 10"	55.43									14,900*	6,758*	14,900*	6,758*
	110	33.53	57.8	175' 11"	53.63									13,000*	5,856*	13,000*	5,856*
	120	36.58	54.4	169' 3"	51.50									11,600*	5,261*	11,600*	5,261*
	130	39.62	50.8	161' 7"	49.26									10,300*	4,672*	10,300*	4,672*
	140	42.67	47.0	152' 10"	46.58									9,200*	4,173*	9,000*	4,082*
	150	45.72	42.9	142' 10"	43.53									8,300*	3,764*	7,700*	3,492*
	160	48.77	38.5	131' 2"	39.99									7,500*	3,401*	6,500*	2,948*
	170	51.82	33.6	117' 6"	35.81									6,800*	3,084*	5,500*	2,494*
180	54.86	28.1	100' 9"	30.70									6,200*	2,812*	4,600*	2,066*	
190	57.91	21.2	78' 11"	24.05									5,600*	2,540*	3,800*	1,723*	
200	60.96	10.7	43' 11"	13.39									4,900*	2,222*	3,000*	1,360*	

(1) — Refer to page 6.

(continued)

GENERAL INFORMATION ONLY



000000  
 LINA BELLI  
 8100 804 808 741 00:00 1002:02:40

HC-238A open throat boom						"A" upper and "A" bumper <sup>①</sup> ctwts.								"AB" upper and "A" bumper counterweights				
Length	Radius		Angle	Boom point height <sup>②</sup>		On outriggers				On tires (static)				On outriggers only				
	Feet	meters		Feet	meters	Over rear		Over side and 360° swing <sup>③</sup>		Over rear		Over side		Over rear		Over side and 360° swing <sup>③</sup>		
			Degrees			Pounds	kilograms	Pounds	kilograms	Pounds	kilograms	Pounds	kilograms	Pounds	kilograms	Pounds	kilograms	
180' (54.86 m)	35	10.67	79.9	183'	11"	56.05	47,300*	21,454*	47,300*	21,454*					47,300*	21,454*	47,300*	21,454*
	40	12.19	78.3	182'	11"	55.70	45,100*	20,457*	45,100*	20,457*					45,100*	20,457*	45,100*	20,457*
	50	15.24	75.0	180'	7"	55.03	39,500*	17,916*	39,500*	17,916*					39,500*	17,916*	39,500*	17,916*
	60	18.29	71.7	177'	7"	54.12	34,200*	15,512*	31,200*	14,152*					34,200*	15,512*	34,200*	15,512*
	70	21.34	68.3	173'	11"	53.01	29,900*	13,562*	24,600*	11,158*					29,900*	13,562*	29,900*	13,562*
	80	24.38	64.8	169'	7"	51.69	24,300*	11,022*	19,700*	8,935*					24,300*	11,022*	24,300*	11,022*
	90	27.43	61.3	164'	6"	50.15	20,500*	9,298*	16,100*	7,302*					21,300*	9,661*	21,300*	9,661*
	100	30.48	57.6	158'	7"	48.35	17,200*	7,801*	13,200*	5,987*					18,900*	8,572*	17,900*	8,119*
	110	33.53	53.7	151'	9"	46.26	14,600*	6,622*	10,900*	4,944*					16,600*	7,529*	15,100*	6,849*
	120	36.58	49.7	143'	11"	43.85	12,400*	5,624*	9,100*	4,127*					14,800*	6,713*	12,900*	5,851*
	130	39.62	45.3	134'	9"	41.06	10,600*	4,808*	7,600*	3,447*					13,400*	6,078*	11,000*	4,989*
	140	42.67	40.7	124'	0"	37.80	9,100*	4,127*	6,200*	2,912*					11,900*	5,397*	9,500*	4,309*
	150	45.72	35.5	111'	3"	33.91	7,800*	3,538*	5,100*	2,313*					10,600*	4,808*	8,100*	3,574*
	160	48.77	29.6	95'	7"	29.14	6,600*	2,993*	4,200*	1,905*					9,300*	4,218*	6,900*	3,129*
170	51.82	22.3	75'	1"	22.88	5,600*	2,540*	3,300*	1,496*					8,100*	3,674*	5,900*	2,676*	
180	54.86	11.3	42'	0"	12.80	4,700*	2,131*	2,500*	1,133*					7,100*	3,220*	5,000*	2,267*	
190' (57.91 m)	40	12.19	78.9	193'	2"	50.87									40,100*	18,189*	40,100*	18,189*
	50	15.24	75.8	190'	11"	58.18									35,100*	15,921*	35,100*	15,921*
	60	18.29	72.7	188'	1"	57.32									28,000*	12,700*	28,000*	12,700*
	70	21.34	69.5	184'	8"	56.28									24,500*	11,113*	24,500*	11,113*
	80	24.38	66.3	180'	7"	55.04									21,400*	9,706*	21,400*	9,706*
	90	27.43	62.9	175'	10"	53.59									18,900*	8,572*	18,900*	8,572*
	100	30.48	59.5	170'	4"	51.92									16,500*	7,484*	16,500*	7,484*
	110	33.53	55.9	164'	0"	49.99									14,700*	6,667*	14,700*	6,667*
	120	36.58	52.2	156'	9"	47.78									13,100*	5,942*	12,700*	5,760*
	130	39.62	48.3	148'	5"	45.24									11,700*	5,307*	10,800*	4,898*
	140	42.67	44.1	138'	10"	42.32									10,600*	4,808*	9,200*	4,173*
	150	45.72	39.6	127'	8"	38.51									9,400*	4,263*	7,900*	3,583*
	160	48.77	34.5	114'	5"	34.87									8,500*	3,855*	6,700*	3,039*
	170	51.82	28.6	98'	2"	29.93									7,100*	3,442*	5,100*	2,485*
180	54.86	21.7	77'	0"	23.47									6,900*	3,129*	4,800*	2,177*	
190	57.91	11.0	43'	0"	13.10									5,900*	2,676*	4,000*	1,814*	
200' (60.96 m)	40	12.19	79.5	203'	4"	61.97									36,300*	16,465*	36,300*	16,465*
	50	15.24	76.6	201'	2"	61.32									28,600*	12,972*	28,600*	12,972*
	60	18.29	73.6	198'	6"	60.51									25,000*	11,339*	25,000*	11,339*
	70	21.34	70.6	195'	3"	59.52									21,900*	9,933*	21,900*	9,933*
	80	24.38	67.5	191'	5"	58.36									19,100*	8,663*	19,100*	8,663*
	90	27.43	64.4	187'	0"	57.00									16,700*	7,574*	16,700*	7,574*
	100	30.48	61.2	181'	10"	55.43									14,900*	6,758*	14,900*	6,758*
	110	33.53	57.0	175'	11"	53.63									13,000*	5,896*	13,000*	5,896*
	120	36.58	54.4	169'	3"	51.50									11,600*	5,261*	11,600*	5,261*
	130	39.62	50.8	161'	7"	49.25									10,300*	4,672*	10,300*	4,672*
	140	42.67	47.0	152'	10"	46.59									9,200*	4,173*	9,000*	4,082*
	150	45.72	42.9	142'	10"	43.53									8,300*	3,764*	7,700*	3,492*
	160	48.77	38.5	131'	2"	39.99									7,500*	3,401*	6,500*	2,948*
	170	51.82	33.6	117'	6"	35.81									6,800*	3,084*	5,500*	2,494*
180	54.86	28.1	100'	9"	30.70									6,200*	2,812*	4,600*	2,086*	
190	57.91	21.2	78'	11"	24.05									5,800*	2,540*	3,800*	1,723*	
200	60.96	10.7	43'	11"	13.39									4,900*	2,222*	3,000*	1,360*	

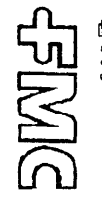
Not applicable

Not applicable

①②③ — Refer to page 6.

(continued)

GENERAL INFORMATION ONLY



CANADA

HC-238A open throat boom						"A" upper and "A" bumper counterweights								"AB" upper and "A" bumper counterweights			
Length	Radius		Angle	Boom point height ②		On outriggers				On tires (static)				On outriggers only			
	Feet	meters		Feet	meters	Over rear		Over side and 360° swing ①		Over rear		Over side		Over rear		Over side and 360° swing ③	
			Degrees			Pounds	kilograms	Pounds	kilograms	Pounds	kilograms	Pounds	kilograms	Pounds	kilograms	Pounds	kilograms
210' (64.01 m)	50	15.24	77.2	211' 5"	64.45									25,700*	11,657*	25,700*	11,657*
	60	18.29	74.4	208' 11"	63.08									22,500*	10,205*	22,500*	10,205*
	70	21.34	71.6	205' 10"	62.75									19,700*	8,935*	19,700*	8,935*
	80	24.38	68.6	202' 3"	61.64									17,200*	7,801*	17,200*	7,801*
	90	27.43	65.7	198' 0"	60.36									15,100*	6,849*	15,100*	6,849*
	100	30.48	62.6	194' 2"	58.88									13,200*	5,987*	13,200*	5,987*
	110	33.53	59.5	187' 8"	57.20									11,700*	5,307*	11,700*	5,307*
	120	36.58	56.3	181' 5"	55.29									10,300*	4,672*	10,300*	4,672*
	130	39.62	53.0	174' 3"	53.12									9,100*	4,127*	9,100*	4,127*
	140	42.67	49.5	166' 3"	50.67									8,300*	3,764*	8,300*	3,764*
	150	45.72	46.8	157' 1"	47.89									7,400*	3,356*	7,400*	3,356*
	160	48.77	44.8	146' 0"	44.71									6,700*	3,039*	6,700*	2,857
	170	51.82	42.5	134' 8"	41.04									6,000*	2,721*	6,000*	2,358
	180	54.86	39.8	120' 5"	36.71									5,500*	2,494*	5,500*	1,950
	190	57.91	37.4	103' 2"	31.45									4,900*	2,222*	4,900*	1,587
	200	60.96	35.0	80' 9"	24.61									4,600*	2,086*	4,600*	1,270
210	64.01	32.6	44' 10"	13.67									3,800*	1,760*	3,800*	997	
220' (67.06 m)	50	15.24	77.8	221' 8"	67.57									23,200*	10,523*	23,200*	10,523*
	60	18.29	75.1	219' 3"	66.84									20,300*	9,207*	20,300*	9,207*
	70	21.34	72.4	216' 4"	65.95									17,800*	8,073*	17,800*	8,073*
	80	24.38	69.7	212' 11"	64.90									15,500*	7,030*	15,500*	7,030*
	90	27.43	66.8	208' 11"	63.39									13,600*	6,168*	13,600*	6,168*
	100	30.48	64.0	204' 4"	62.29									11,900*	5,397*	11,900*	5,397*
	110	33.53	61.0	199' 2"	60.71									10,400*	4,717*	10,400*	4,717*
	120	36.58	58.0	193' 3"	58.91									9,200*	4,173*	9,200*	4,173*
	130	39.62	54.9	186' 8"	56.89									8,100*	3,674*	8,100*	3,674*
	140	42.67	51.7	179' 2"	54.62									7,300*	3,211*	7,300*	3,211*
	150	45.72	48.2	170' 10"	52.06									6,500*	2,946*	6,500*	2,448*
	160	48.77	44.7	161' 3"	49.16									5,900*	2,676*	5,900*	2,576*
	170	51.82	40.8	150' 6"	45.88									5,300*	2,404*	5,300*	2,207
	180	54.86	36.7	138' 0"	42.06									4,800*	2,177*	4,800*	1,959
	190	57.91	32.0	123' 4"	37.60									4,400*	1,995*	4,400*	1,496
	200	60.96	26.7	105' 7"	32.19									4,000*	1,814*	4,000*	1,179
210	64.01	20.2	82' 7"	25.16									3,500*	1,632*	3,500*	—	
220	67.06	10.2	45' 9"	13.96									3,400*	1,542*	3,400*	—	
230' (70.10 m)	50	15.24	78.3	231' 11"	70.69									21,000*	9,525*	21,000*	9,525*
	60	18.29	75.8	229' 7"	69.99									18,400*	8,346*	18,400*	8,346*
	70	21.34	73.2	226' 10"	69.14									16,100*	7,302*	16,100*	7,302*
	80	24.38	70.6	223' 7"	68.14									13,800*	6,259*	13,800*	6,259*
	90	27.43	67.9	219' 0"	66.99									12,100*	5,488*	12,100*	5,488*
	100	30.48	65.2	215' 5"	65.67									10,500*	4,808*	10,500*	4,808*
	110	33.53	62.4	210' 6"	64.17									9,400*	4,263*	9,400*	4,263*
	120	36.58	59.6	205' 1"	62.48									8,200*	3,719*	8,200*	3,719*
	130	39.62	56.6	198' 9"	60.68									7,300*	3,311*	7,300*	3,311*
	140	42.67	53.6	191' 4"	58.48									6,500*	2,948*	6,500*	2,948*
	150	45.72	50.4	184' 0"	56.07									5,900*	2,676*	5,900*	2,676*
	160	48.77	47.1	175' 3"	53.40									5,200*	2,358*	5,200*	2,358*
	170	51.82	43.6	165' 4"	50.40									4,700*	2,131*	4,700*	2,131*
	180	54.86	39.9	154' 2"	46.98									4,300*	1,950*	4,300*	1,723
	190	57.91	35.8	141' 3"	43.06									3,900*	1,769*	3,900*	1,406
	200	60.96	31.3	126' 2"	38.46									3,500*	1,587*	3,500*	1,043
210	64.01	26.1	107' 11"	32.80									3,200*	1,451*	3,200*	—	
220	67.06	19.7	84' 4"	25.70									2,800*	1,270*	2,800*	—	
230	70.10	10.0	46' 8"	14.22									2,900*	997*	2,900*	—	

①Applicable only to machines with booms 50' (15.24 m) through 180' (54.86 m) long — without jib

②Measured from center of boom head sheave to ground with machine standing on tires

③Capacities for 360° swing applicable only when front center jack and front and rear outriggers are set in proper working position.

④Capacities on outriggers, over side, with 50' (15.24 m) long boom only — applicable only when front center jack is set in proper working position.

**GENERAL INFORMATION ONLY**

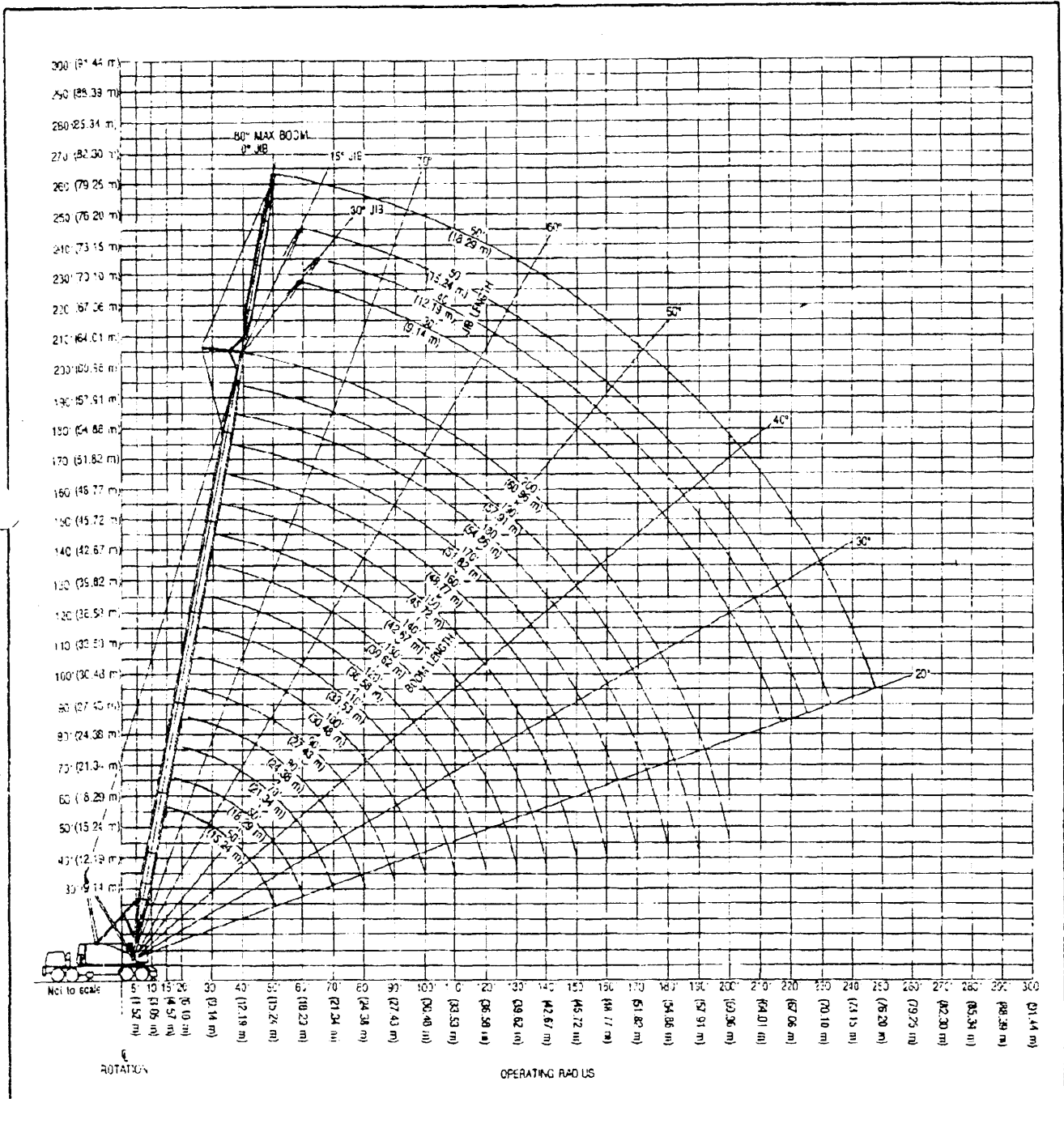
## HC-238A boom/jib working ranges — open throat boom

**Boom** — tubular: 60" (1.52 m) wide, 54" (1.37 m) deep with open throat top section, 1 3/4" (35 mm) boom pendants, boom live mast, and boom midpoint suspension pendants as required

**Jib** — tubular: 36" (0.91 m) deep, 30" (0.76 m) wide.

**Counterweight** — refer to charts page 1.

**Mounting** — rubber tire mobile base: FMC, 8 x 4 drive, 270" (6.85 m) wheelbase, 11' 10" (3.61 m) wide.



FMC Corporation Cable Crane and Excavator Division Cedar Rapids Iowa 52406  
 Link-Belt® cranes & excavators manufactured in: Cedar Rapids Iowa • Lexington & Bowling Green Kentucky • Ontario Canada • Milan Italy • Queretaro Mexico & Nagoya Japan (under license)