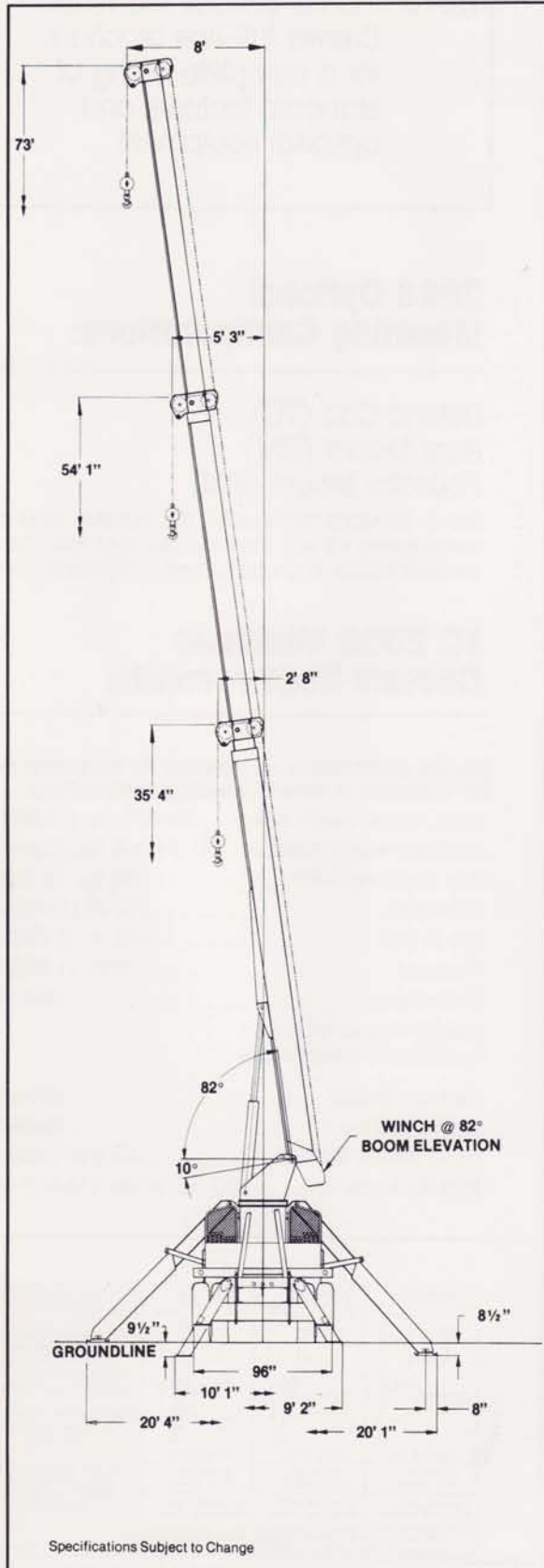


2800 Series

STINGER 2863

Dimensional Data:



TC 2863:

Maximum sheave height: 73' (22.2 m)

Maximum lifting radius: 61' 6" (18.7 m)

Maximum sheave height with 40' (12.2 m) Jib: 113' (34.4 m)

Maximum lifting capacity: 28,800 lbs. (13,063 kg)

TC 2863 Weights:

Standard TC 2863 with 18' (5.5 m) Subframe13,950 lbs. (6,328 kg)

Optional Wood Flatbed:1,570 lbs. (712 kg)

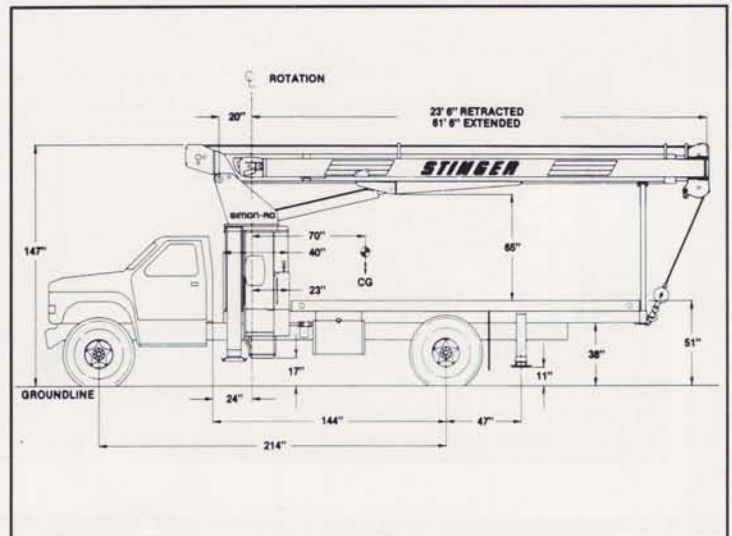
Optional Two-Stage Jib:915 lbs. (415 kg)

Minimum axle weights with crane installed on truck and in stowed configuration for 85% of tipping stability (without jib).

Front Axle8,900 lbs. (4,037 kg)

Rear Axle15,800 lbs. (7,167 kg)

Do Not Operate Within 10 Feet Of Overhead Power Lines.



2863 Capacity and Range Chart:

LOAD RATINGS IN LBS. WITH OUTRIGGERS EXTENDED										AREA OF OPERATION		
OR P A R T S I N F O R G T	LOADED BOOM ANGLE		BOOM LENGTH									
	△	△	△	△	△	△	△	△	△			
4	78	28800										
5	76	24000										
8	69	16800	74	14200	78	14200						
10	64	14200	72	13400	76	13000	78	12600				
12	58	12200	68	11500	73	11100	78	10800	78	9425		
15	49	10100	63	9525	69	9125	73	8825	76	7725		
20	32	7425	53	7325	62	7025	67	6725	71	6425		
25			42	5825	54	5525	61	5425	66	5225		
30			26	4425	45	4525	55	4325	61	4225		
35					35	3725	47	3625	56	3525		
40							20	2825	38	3025	50	2925
45									29	2525	44	2425
50									14	1725	36	2125
55											27	1725
60											13	1225

NOTE: RATINGS ABOVE THE HEAVY LINE ARE BASED ON STRUCTURAL COMPETENCE AND NOT ON MACHINE STABILITY

DEDUCTIONS FROM RATED LOADS FOR LOAD HANDLING DEVICES:

- AUXILIARY BLOCK: 50 LBS
- OVERHAUL BALL: 125 LBS
- CRANE LOAD BLOCK: 200 LBS

STOWED JIB DEDUCTIONS: 450, 325, 250, 200, 175

JIB CAPACITIES FOR ALL BOOM LENGTHS										
LOADED BOOM ANGLE	35°	40°	45°	50°	55°	60°	65°	70°	75°	80°
RETRACTED 24 FT JIB	700	825	1000	1150	1340	1600	1900	2300	3100	4160
EXTENDED 40 FT JIB	520	580	650	730	810	930	1080	1400	1810	2260

NOTE: Please consult the Terex Cranes full-line brochure for a complete listing of standard features and optional equipment.

2863 Optional Mounting Configurations:

- Behind Cab (TC)
- Rear Mount (RM)
- Pedestal Mount (PM)

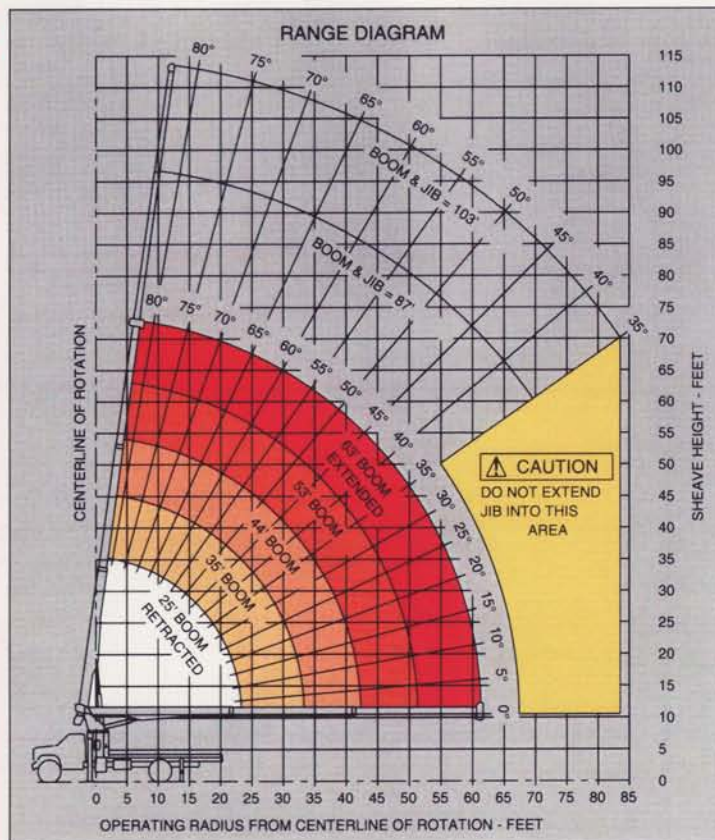
(Some standard features for the optional mounting configurations will vary. Please consult your Terex Cranes dealer or factory for chassis and mounting requirements.)

TC 2863 Minimum Chassis Requirements:

Chassis specifications are minimum for truck-crane mount. Not applicable to optional mounting configurations.

- Gross Vehicle Weight Rating.....33,000 lbs. (14,968 kg)
- Front Axle Weight Rating.....12,000 lbs. (5,443 kg)
- Rear Axle Weight Rating.....21,000 lbs. (9,525 kg)
- Wheelbase.....214 in. (5,436 mm)
- Cab To Axle.....144 in. (3,658 mm)
- Afterframe.....75 in. (1,905 mm)
- Transmission..... Heavy-Duty (Neutral lock-up required for automatic transmission)

- Electrical System..... Heavy-Duty
- Cooling System..... Heavy-Duty
- Frame Section Modulus.....15.9 in.³ (260 cm³)
- RBM Per Frame Fail.....1,400,000 in./lbs. (16,130 kg-m)



NOTE: Diagrams depict recommended mounting dimensions. The dimensions of optional pedestal and rear mounts will vary. Please consult your dealer or Terex Cranes for specifics. Dimensions do not include load deflection.

1 PART LINE	2 PART LINE	3 PART LINE	CAUTION ANTI-TWO-BLOCK SYSTEM MUST BE IN GOOD OPERATING CONDITION BEFORE OPERATING CRANE. REFER TO OWNER'S MANUAL. KEEP AT LEAST 3 WRAPS OF LOADLINE ON DRUM AT ALL TIMES. USE ONLY 9/16" DIAMETER CABLE WITH 33,600 LB. BREAKING STRENGTH ON THIS MACHINE.
OVERHAUL BALL LOADS UP TO 9,600 LBS. STD. CABLE 6,720 LBS. ROT. RESISTANT CABLE	CRANE LOAD BLOCK LOADS UP TO 19,200 LBS. STD. CABLE 13,440 LBS. ROT. RESISTANT CABLE	AUX. BLOCK CRANE LOAD BLOCK LOADS UP TO 28,800 LBS. STD. CABLE 20,160 LBS. ROT. RESISTANT CABLE	

THIS MACHINE COMPLIES WITH OSHA REGULATIONS 1910.180 AND 1926.550 WHERE APPLICABLE AT DATE OF MANUFACTURE 3-654-00460