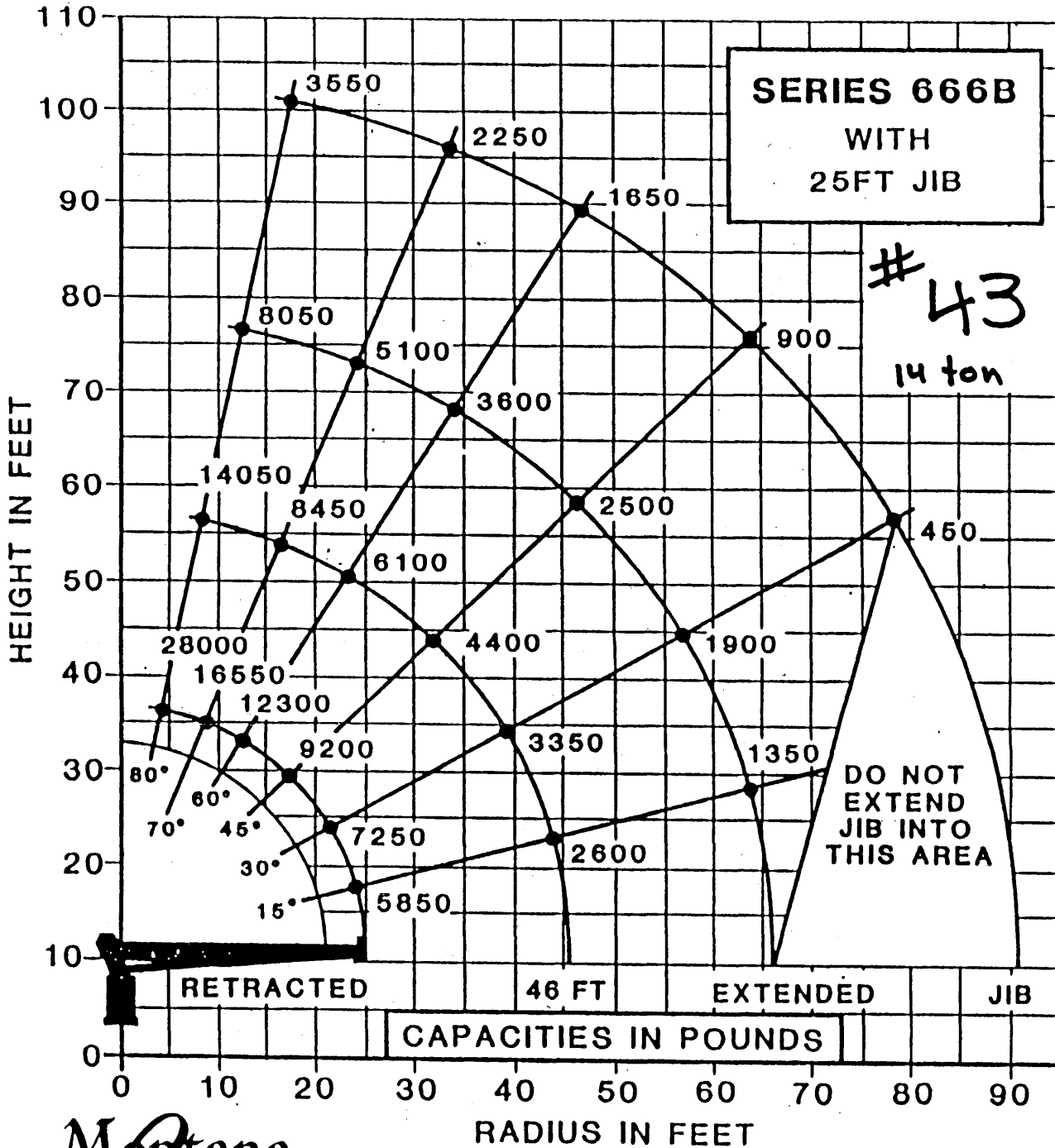


NATIONAL CRANE CORPORATION



Montana Ready-Mix

READY MIX CONCRETE

- EXCAVATION
- SAND AND GRAVEL
- ROADS AND PARKING
- SEWER AND WATER
- BIO-REMEDIATION
- SITE DEVELOPMENT
- DEMOLITION
- FORMING MATERIALS
- TILT-UP CONCRETE
- UST REMOVAL & INSTALLATION

CRANE SERVICE

- TRACK LOADER
- WHEEL LOADER
- GRADER
- DUMP TRUCK
- CONCRETE BREAKER
- BACK HOE
- EXCAVATOR
- COMPACTOR
- SCRAPER
- DOZER

Greg Poncelet, President
209 E. Cedar Bozeman, MT 59715
(406) 586-1234 FAX (406) 586-3836

CAUTION

1. LOAD RATINGS SHOWN ON THIS CHART ARE MAXIMUM ALLOWABLE LOADS WITH THE OUTRIGGERS PROPERLY EXTENDED ON A FIRM LEVEL SURFACE AND THE CRANE LEVELED AND MOUNTED ON A FACTORY-RECOMMENDED TRUCK.
2. ALWAYS LEVEL THE CRANE WITH THE LEVEL INDICATOR LOCATED ON THE CRANE FRAME.
3. THE OPERATOR MUST REDUCE LOADS TO ALLOW FOR FACTORS SUCH AS WIND, GROUND CONDITIONS, OPERATING SPEEDS AND THE EFFECT OF FREELY SUSPENDED LOADS.
4. OVERLOADING THIS CRANE MAY CAUSE STRUCTURAL COLLAPSE OR INSTABILITY.
5. WEIGHTS OF ANY ACCESSORIES ATTACHED TO THE BOOM OR LOAD-LINE MUST BE DEDUCTED FROM THE LOAD CHART CAPACITIES.
6. DO NOT EXCEED JIB CAPACITIES AT ANY REDUCED BOOM LENGTH.