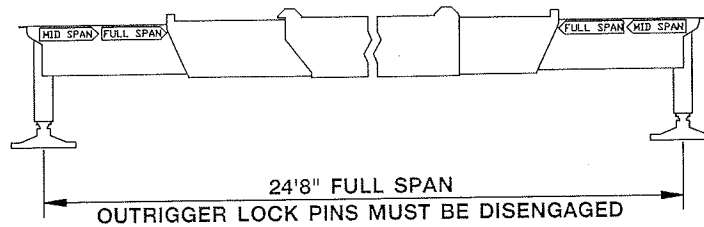


FULL-SPAN OUTRIGGERS

**18127
127' BOOM
31'-55' JIB**



31 TO 127 FOOT BOOM RATED LOADS WITHOUT JIB

LOAD RADIUS (FEET)	LOADED BOOM ANGLE	31 FT BOOM (lb)	LOADED BOOM ANGLE	55 FT BOOM (lb)	LOADED BOOM ANGLE	79 FT BOOM (lb)	LOADED BOOM ANGLE	103 FT BOOM (lb)	LOADED BOOM ANGLE	127 FT BOOM (lb)
7	74.5	80,000								
8	72.4	74,000								
10	68.2	64,000								
12	63.8	56,000	76.9	40,000						
15	56.9	43,000	73.8	38,000	79.8	29,000				
20	44.2	30,000	68.1	31,000	76.2	25,000	80	16,000		
25	27.4	22,500	62	23,400	72.5	21,500	77.2	14,500	80	10,000
30			55.5	18,300	68.5	18,700	74.4	13,000	78	9,500
35			48.6	14,800	64.3	15,100	71.5	11,500	75.9	9,000
40			40.7	12,100	59.9	12,500	68.6	10,500	73.6	8,100
45			31.3	10,100	55.3	10,400	65.9	9,500	71.2	7,200
50			19.4	8,500	50.9	8,800	62.7	8,500	68.8	6,500
55					45.8	7,500	59.3	7,500	66.3	5,800
60					40.1	6,400	55.7	6,500	63.7	5,300
65					33.6	5,400	52	5,600	61.1	4,800
70					25.6	4,600	48.1	4,700	58.4	4,300
75					13.5	3,850	43.9	3,950	55.6	3,900
80							39.3	3,350	52.6	3,400
85							34.3	2,800	49.4	2,850
90							28.4	2,300	46	2,350
95							21	1,850	42.5	1,900
100							8.2	1,500	38.8	1,550
105									34.6	1,200
110									30	900
115									24.6	650
	0	19,000	0	7,700	0	3,600	0	1,450		


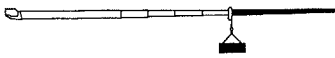
31' JIB RATED LOADS

RADIUS FULLY EXTENDED	LOADED BOOM ANGLE	RATED LOADS ALL BOOM LENGTHS
30	80	3,400
46	75	3,200
60	70	2,700
73	65	2,100
85	60	1,700
96	55	1,200
106	50	650

55' JIB RATED LOADS

RADIUS FULLY EXTENDED	LOADED BOOM ANGLE	RATED LOADS ALL BOOM LENGTHS
36	80	2,200
54	75	2,200
70	70	1,600
85	65	1,000

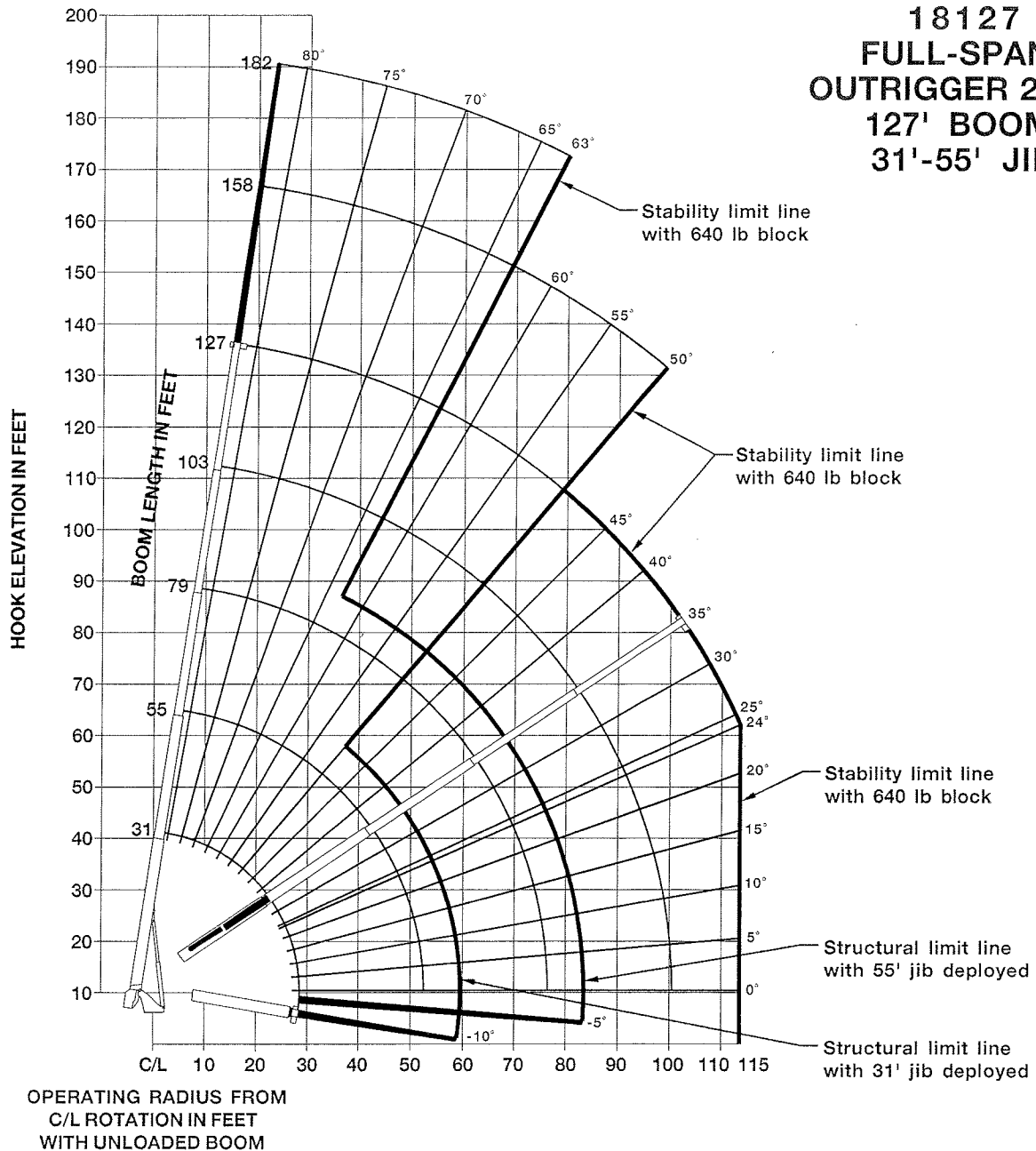
RATED LOAD REDUCTIONS WITH JIB

BOOM LENGTH	31' JIB STOWED		31' - 55' JIB ERECTED AT 31' LENGTH	
				
31'	Reduce load 800 lb		Reduce load 2,300 lb	
55'	Reduce load 450 lb		Reduce load 2,000 lb	
79'	Reduce load 350 lb		Reduce load 1,900 lb	
103'	Reduce load 250 lb		Reduce load 1,800 lb	
127'	Reduce load 200 lb		Reduce load 1,700 lb	

NOTE

1. All capacities are in pounds, angles in degrees, radius in feet.
2. Loaded boom angles are given as reference only.
3. Shaded areas are structurally limited capacities.

**18127
FULL-SPAN
OUTRIGGER 24'8"
127' BOOM
31'-55' JIB**



SET-UP

1. Fully extend and set outriggers to full-span location, level crane and set front stabilizer.

OPERATION

1. The 31 ft. boom length capacities are based on boom fully retracted. If not fully retracted, do not exceed 55 ft. boom length capacities.
2. Do not extend unloaded boom or jib beyond stability limit line on range chart as loss of stability may occur.
3. Load blocks and slings are considered to be a part of the load.
4. Operate with jib by radius when main boom is fully extended and by boom angle when main boom is partially extended. Do not exceed jib capacities at any partially extended boom length.
5. All jib loads must be lifted with single part reeving.